



Looking north on 248 Street, Langley Township

# Planning for a Regional Natural Infrastructure Network

## PROJECT OVERVIEW

Laurie Bates-Frymel

Senior Planner (Environment), Regional Planning and Housing Services

Conservation Connections 2025 | November 4, 2025

Orbit# 80198797

**metrovancouver**

Metro Vancouver  
acknowledges that the region's  
residents live, work, and learn on the  
shared territories of many  
Indigenous peoples, including  
10 local First Nations: qícəy (Katzie),  
q'wícənələn (Kwantlen), k'wík'wəłəm (Kwikwetlem),  
máthxwí (Matsqui), x'məθk'əyəm (Musqueam),  
qíqəyt (Qayqayt), se'mya'me (Semiahmoo),  
Skwxwú7mesh Úxwumixw (Squamish),  
scəwəθən məsteyax'w (Tsawwassen), and  
səlilwataʔ4 (Tsleil-Waututh).

Metro Vancouver respects the diverse  
and distinct histories, languages, and cultures  
of First Nations, Métis, and Inuit, which  
collectively enrich our lives  
and the region.

**metrovancover**

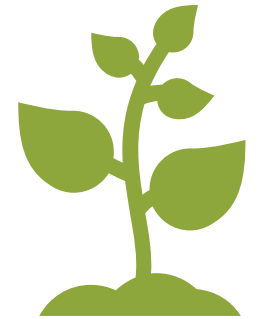
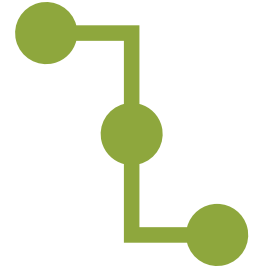
Scan here for the statement in  
hənqəminəm and Skwxwú7mesh  
languages

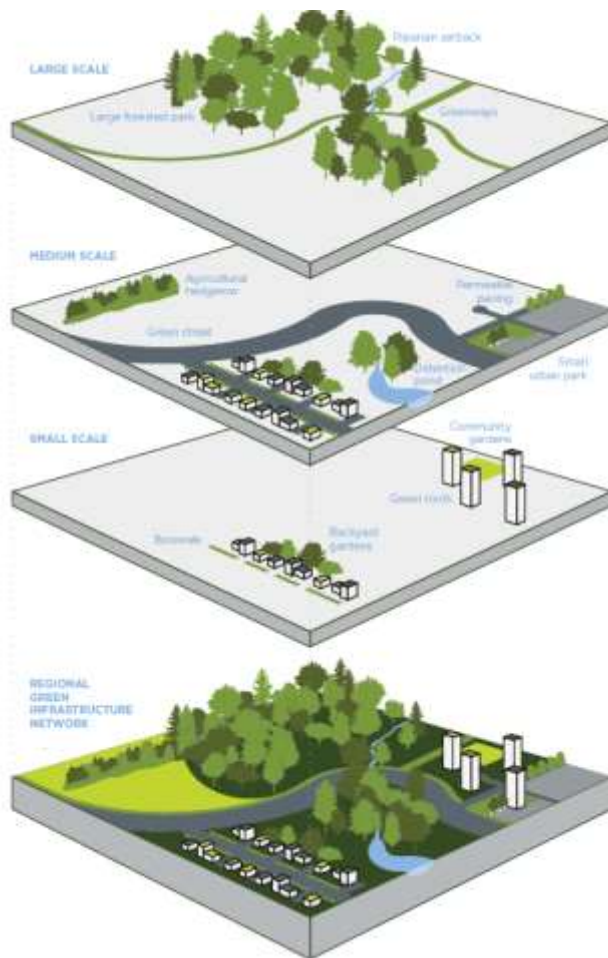


**metrovancover**

# OUTLINE

1. What is a Regional Natural Infrastructure Network?
2. Metro Vancouver and Policy Context
3. Project Timelines and Phases
  - a) Mapping
  - b) Tools and Options
  - c) Implementation
4. Next Steps





# Regional Natural Infrastructure Network

PREFERENCE  
LESS → MORE



**CONNECTIVITY.** Green infrastructure should be connected wherever possible. Multi-partner coordination is required to overcome obstacles associated with jurisdictional boundaries.



**PROXIMITY.** Green infrastructure projects located close to one another provide more benefits than those that are farther apart.



**SIZE.** Although existing land use will dictate the type of green infrastructure that can be implemented, generally speaking, larger projects will provide more benefits than smaller ones.

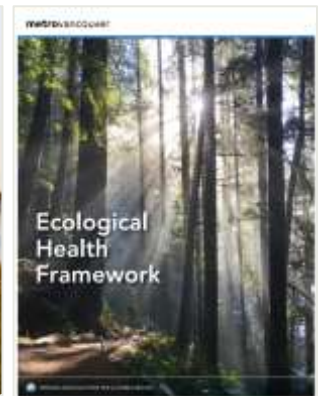
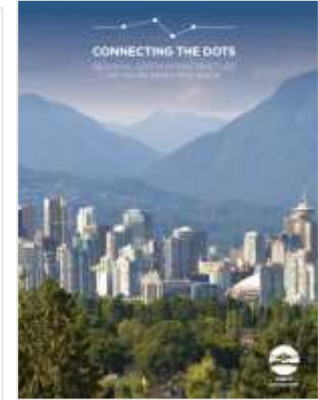
*Principles of conservation biology.*



# METRO VANCOUVER LEGAL ENTITIES AND SERVICES



# HISTORICAL POLICY CONTEXT



# CURRENT REGIONAL POLICY CONTEXT





## METRO 2050

Action 3.2.3 for Metro Vancouver to manage Metro Vancouver assets and collaborate with member jurisdictions, First Nations, and other agencies to:

- c) **identify** a regional green infrastructure network that connects ecosystems and builds on existing local networks, while maximizing resilience, biodiversity, and human health benefits; and
- d) **prepare Implementation Guidelines** to support a regional green infrastructure network and to assist with the protection, enhancement, and restoration of ecosystems.







# METRO 2050

And regional targets to:

**INCREASE THE AREA OF LANDS PROTECTED  
FOR NATURE FROM 40%  
TO 50% OF THE REGION'S LAND BASE BY 2050**



**INCREASE THE TOTAL  
REGIONAL TREE  
CANOPY COVER WITHIN  
THE URBAN CONTAINMENT  
BOUNDARY FROM 32% TO  
40% BY THE YEAR 2050**



2025 •

• 2050

# CURRENT REGIONAL POLICY CONTEXT





# Regional Parks and Greenways

23 regional parks

3 regional park reserves

5 regional greenways

13,938 hectares of regional park land

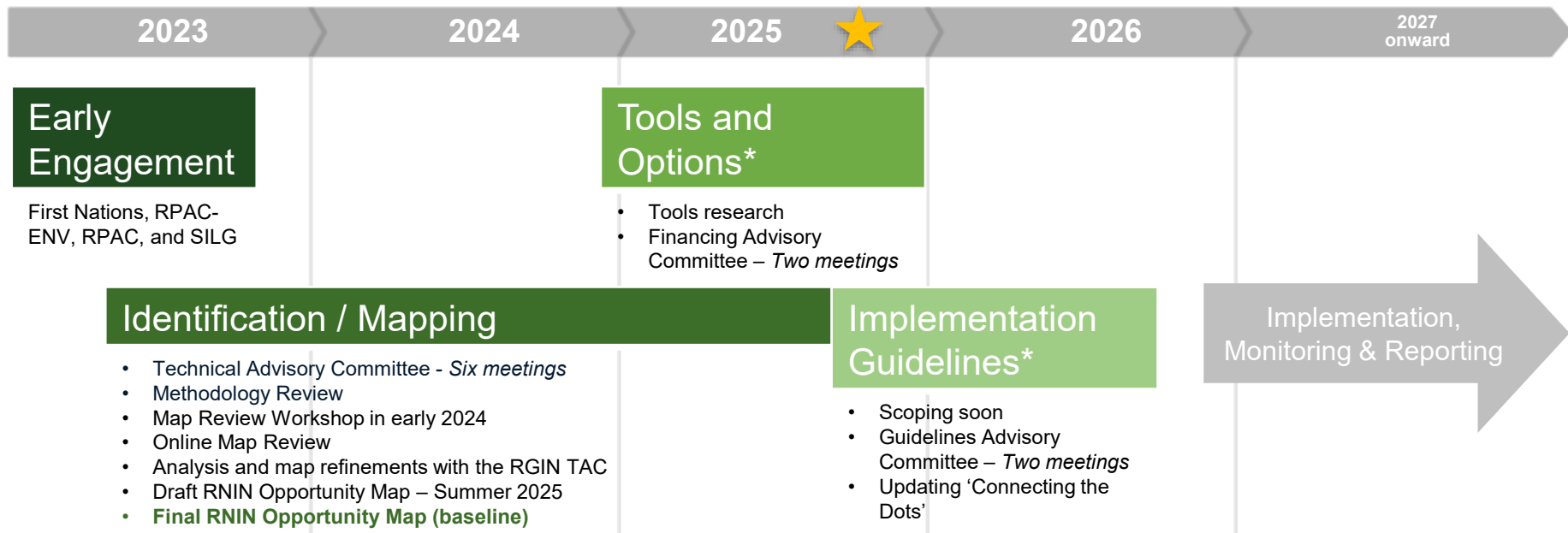
~5% of region

+17% in LSCR and water supply areas



# REGIONAL NATURAL INFRASTRUCTURE NETWORK

## Project Phases and Timelines





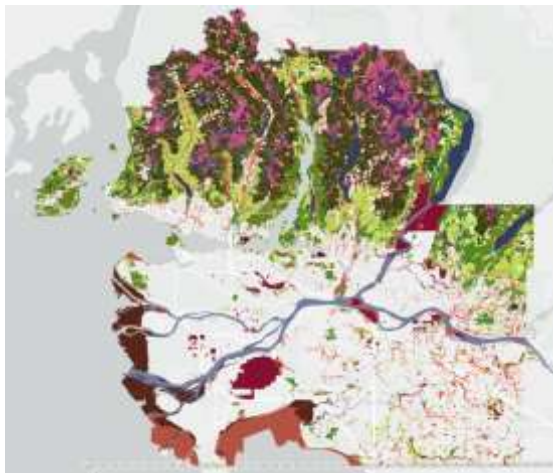
# PHASE 2: NETWORK MAPPING

Methodology guided by a Technical Advisory Committee



# PHASE 2: NETWORK MAPPING

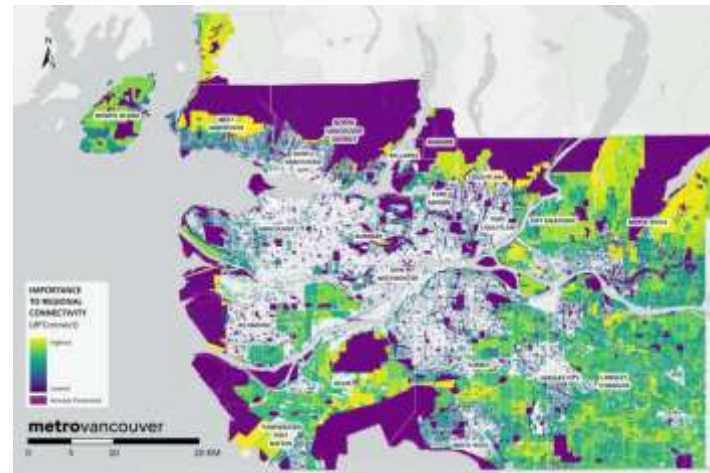
Key datasets used



Sensitive Ecosystem Inventory



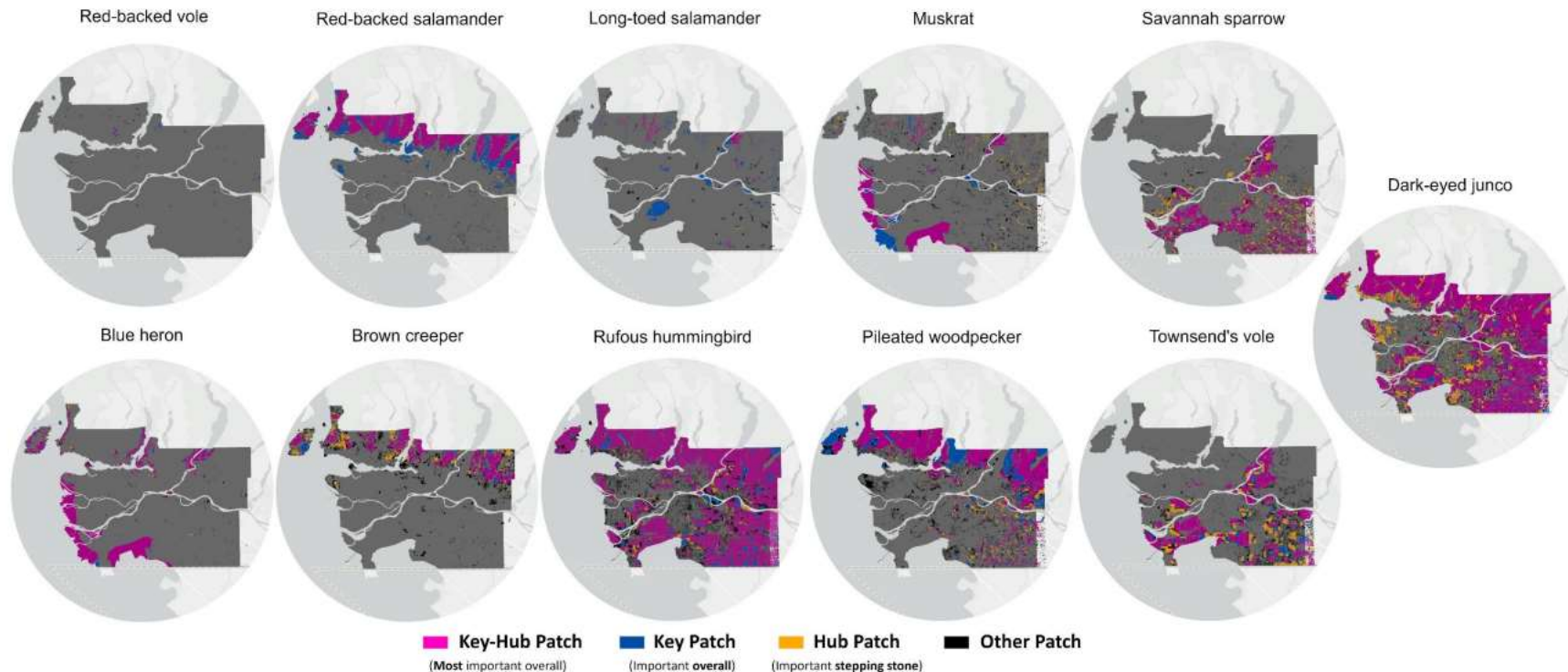
Land Cover Classification



Ecosystem Connectivity Importance

# PHASE 2: NETWORK MAPPING

Key and hub patches for 11 species guilds



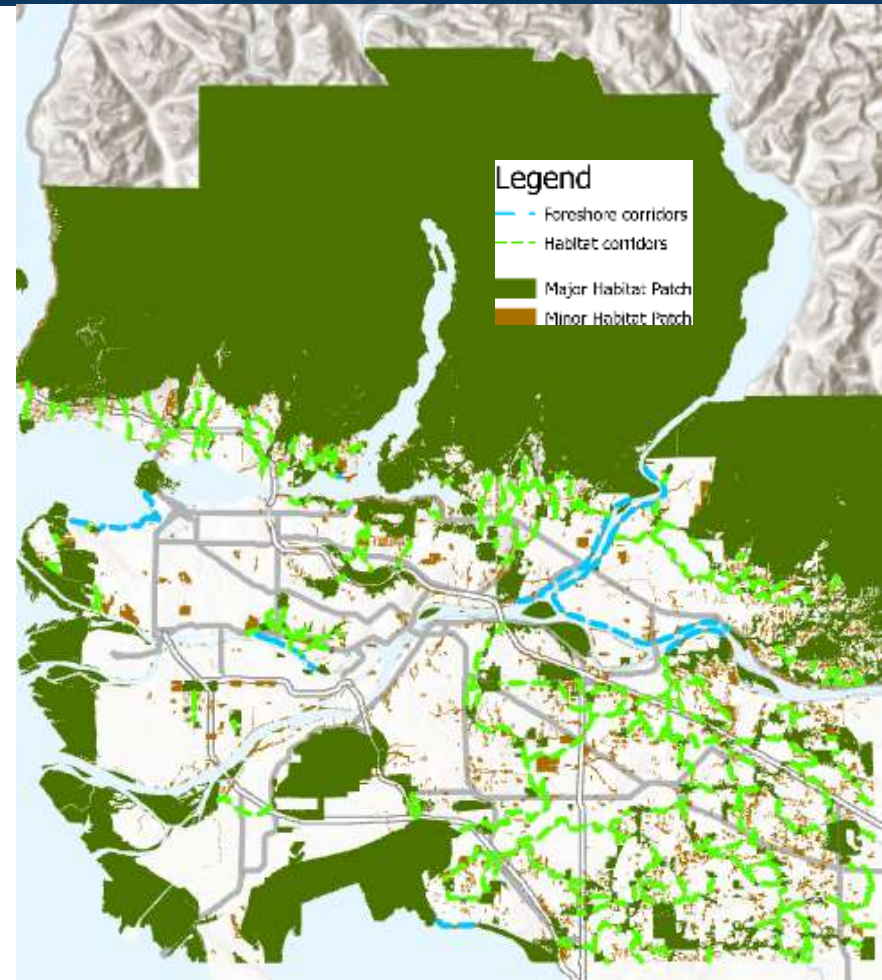
# PHASE 2: NETWORK MAPPING

## Patches

- Major: >10ha, >0.25ha of refuge area (>100m from urban edge), high connectivity rating
- Minor: >0.5ha, <0.25ha of refuge area, lower connectivity rating, but still important
- Golf courses >25% tree canopy
- Developed areas and buildings removed

## Corridors

- Habitat and Foreshore - between major patches
- Least-cost paths - difficulty of movement and barriers
- Professional judgement

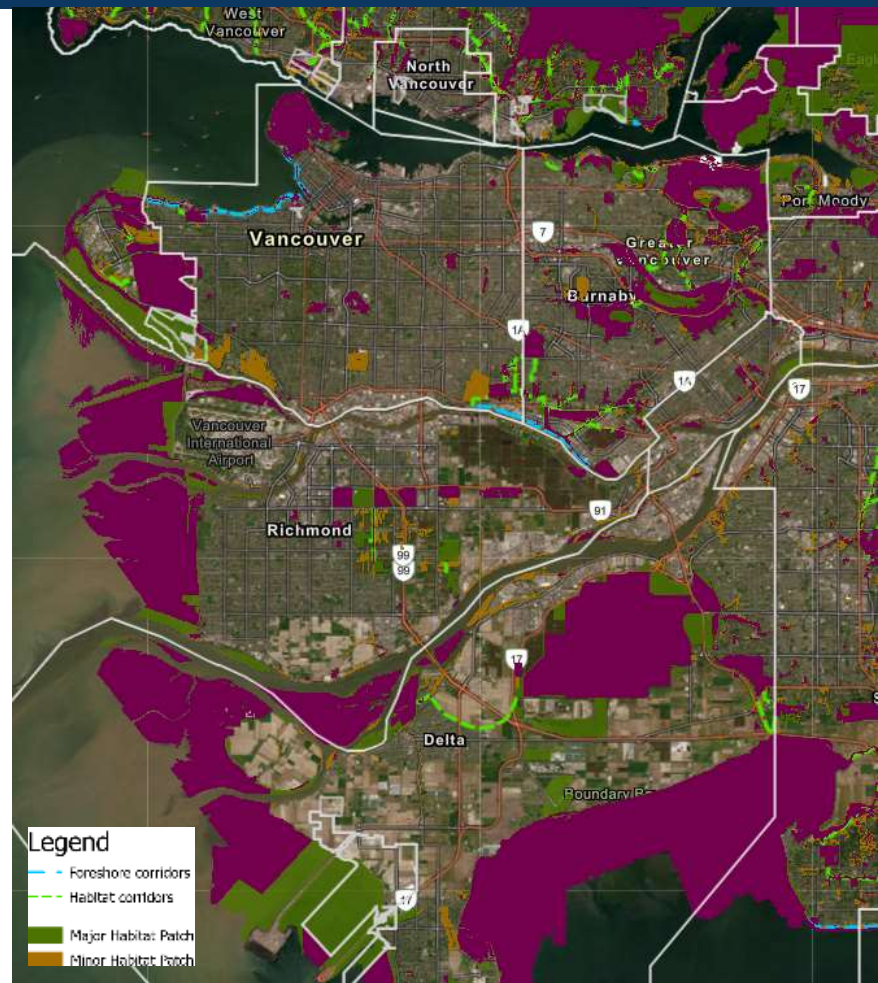




# PHASE 2: NETWORK MAPPING

## Protected Areas

- Parks and protected areas datasets from member jurisdictions
- Metro Vancouver Regional Park Boundaries
- Canadian Protected and Conserved Areas Database
- BC Parks, Ecological Reserves, and Protected Areas
- Conservation covenants (where mapped)



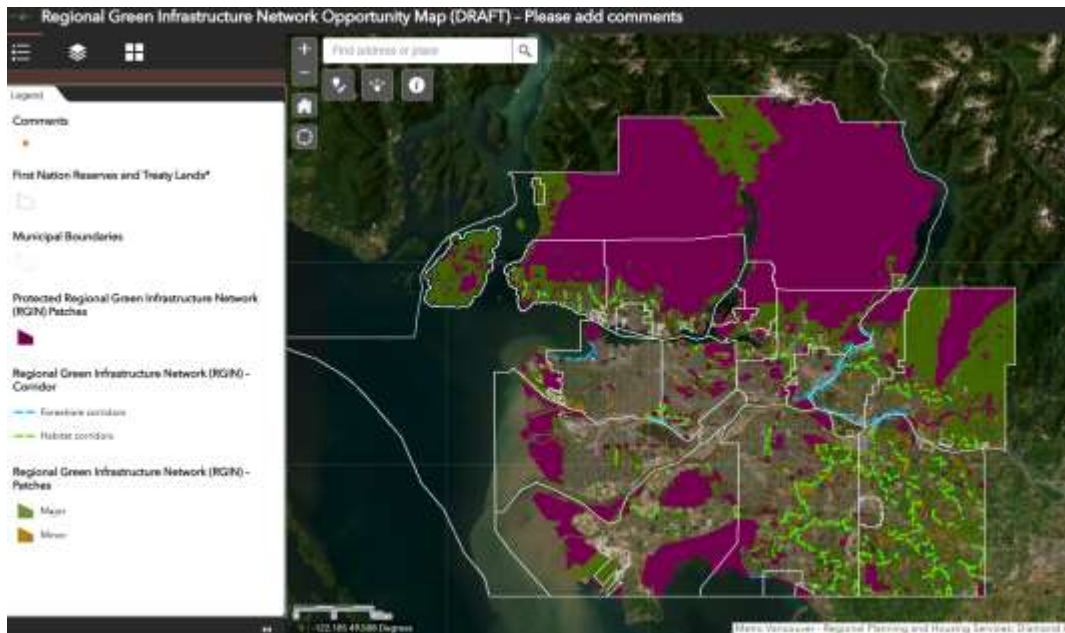
# A NETWORK OPPORTUNITY MAP

## What is it?

- A tool to help inform planning and conservation decisions
- NOT regulatory
- NOT a land use designation

## Layers to be included

- Patches and corridors
- Protected patches
- Local networks
- Critical habitat
- Species at risk occurrences
- Area plans (patches already planned for development)
- Agricultural Land Reserve
- Metro 2050 Regional Land Use Designations



## PHASE 3: TOOLS AND OPTIONS

- Requested by member jurisdictions; co-funded by ECCC
- Recommended tools from various toolkits ([Green Bylaws](#), [Climate-Ready Communities](#), others)
- Potential innovative financing options for:
  - Local governments
  - Non-profit organizations / trusts
  - First Nations
  - Regional-scale fund



## PHASE 3: TOOLS AND OPTIONS

- Guided by a Finance Advisory Committee





## PHASE 4: IMPLEMENTATION GUIDELINES

- Update requested by member jurisdictions; co-funded by ECCC
- Building on '[Connecting the Dots](#)'
- New info that may be included:
  - Indigenous perspectives
  - Local Green/Ecological/Natural Habitat Networks
  - RNIN Opportunity Map
  - Clarify roles
  - Tools and funding options for local governments, First Nations, and NGOs
  - Update local case studies
- Scoping will start soon
  - Needed: Volunteers for the Guidelines Advisory Committee





## NEXT STEPS

- Kick-off the Guidelines Advisory Committee
- Finalize the Opportunity Map
- Complete financing options report
- Update 'Connecting the Dots' by mid-2026



[RGIN@metrovancover.org](mailto:RGIN@metrovancover.org)

**metrovancover**