



Ministry of **Forests, Lands, Natural Resource Operations**  
and **Rural Development**

# Conservation Connections

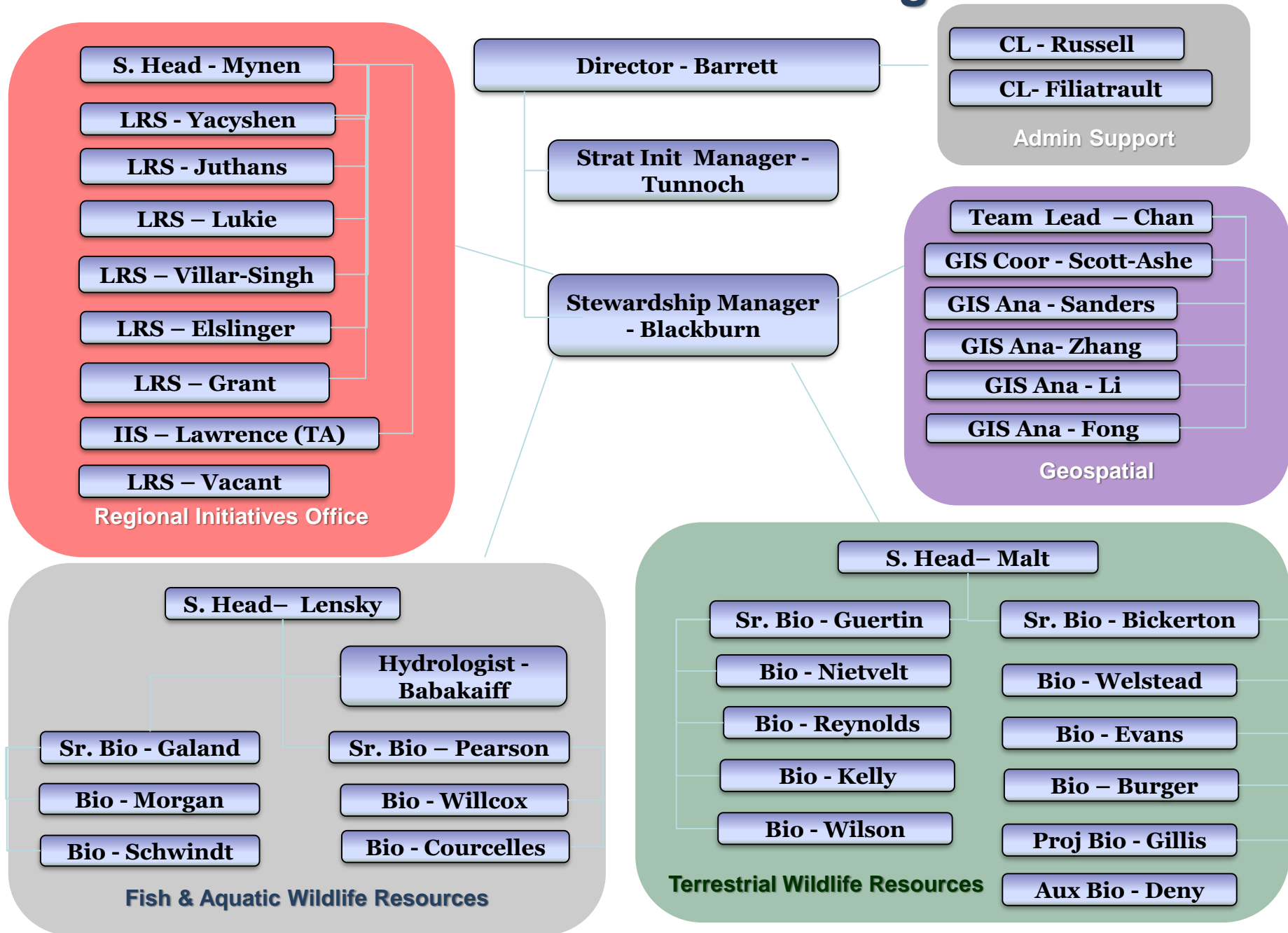
South Coast Conservation Program Event - 2019

**October 16<sup>th</sup>, 2019**

Kristina Lensky, GDBA, BSc, RPBio  
Fish & Aquatic Wildlife Resources Section Head  
Resource Management, FLNRORD (South Coast)



# South Coast Resource Management



## Key Ministry Functions

## Key Legislative Tools

## Resource Management's Roles

### First Nations Engagement

Forest Management

Crown Land Management

Stream & Water Management

Fish & Wildlife Population Management

Forest & Range Practices Act

Land Act

Water Sustainability Act

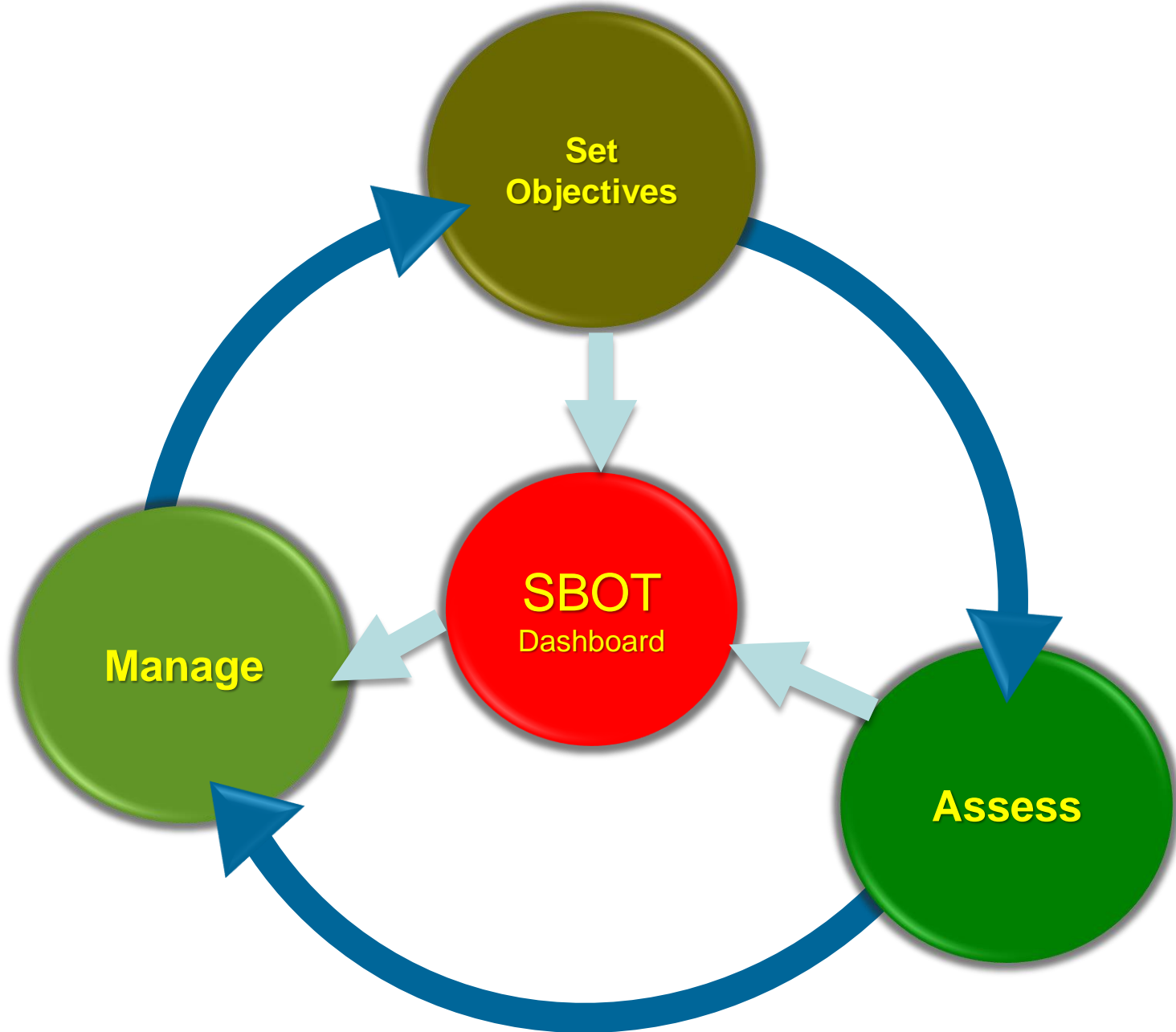
Wildlife Act

- Advise on habitat requirements
- Develop BMPs
- Implement IWMS
  - Conduct monitoring
- Implement Riparian Areas Regulation
- Conduct Research
- Provide geospatial support
  - Implement Cumulative Effects Assessments
- Lead stewardship initiatives

Advisor

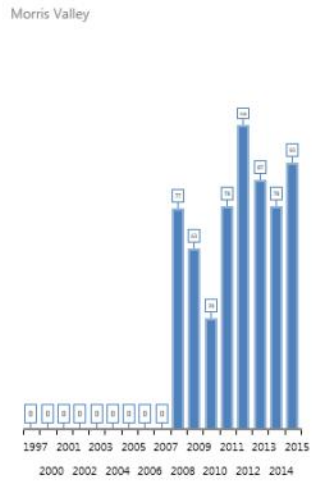
- Manage WMA's
- Issue permits & licences
- Set angling & hunting regulations
- Recover wildlife populations

Decision Maker





Egg Mass Counts (1997 to 2015)

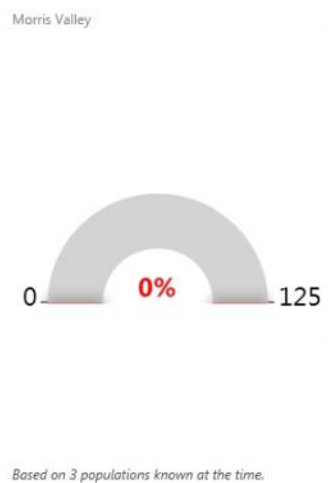


Egg Mass Counts Details

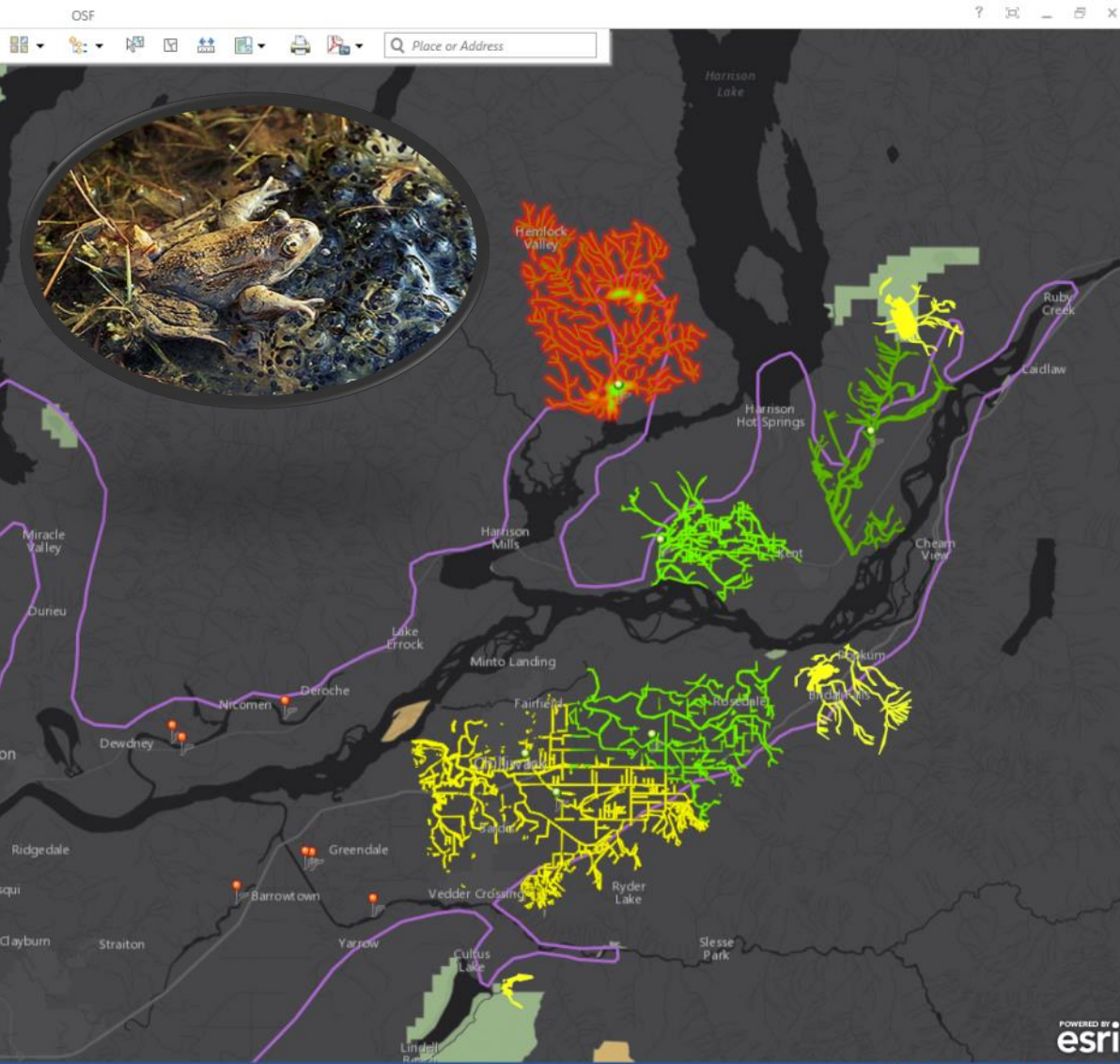
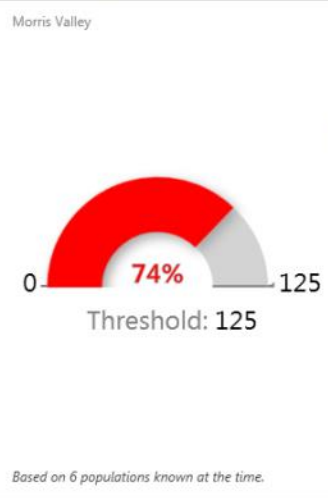
OSF Population: Morris Valley

Population	Morris Valley
Area	12,507,810.00
Protected Lands Name	
Surveyor General Plan NO	
Protect Land Coverage Area	0.00
Percentage of Protected Land Coverage	0.00
Status	Extant
1997	
2000	
2001	
2002	
2003	
2004	
2005	
2006	

Initial Egg Mass (1997)



Most Recent Egg Mass (2015)



# Watershed Objectives Tool

**Client**

Lands / Forest  
Authorizations

RM / FAWR

Water  
Authorizations

**Levers /  
Purpose**

FRPA - Evaluate risk re:  
FSP / cutting permits  
Lands Act - recreation  
impacts

WSA - Objectives /  
Sustainability Plans  
Wildlife Act - Recreation  
ID Indicator watersheds for  
assessments / monitoring

WSA - Instream Works,  
Surface Water Licensing,  
Groundwater Licencing

**Base Map  
& Scale**

FWA Watershed Order > Watershed Assessment Units > Stream > Municipal Drainage Units

**Vulnerability  
data**

Topo / Soils / Rainfall / Stream density / Forest Integrity / Riparian Integrity

**Pressure  
indicators**

Equivalent clearcut area,  
roads, FSPs, cutting permits,  
Lands Act permits

Angling interests, SAR threats

**Total Impervious Area**  
Approvals density (watershed,  
drainage basin, stream)

**Condition**

**FAWR  
Values**

Fish presence / Fish model / SAR Critical Habitat / FN uses and interests / Sensitive streams

**Risk**



# Small Home Range SAR Priority Areas – Gap Analysis

- Conduct a gap analysis to determine priorities for conservation actions for small home range species-at-risk (SAR)
  - Work collaboratively with First Nations to improve wildlife management, habitat conservation and recover SAR
  - Use *systematic conservation planning* approach (Margules & Pressey 2000)
- Expected results = better conservation outcomes for SAR, improved return on investment, and increased co-benefits for biodiversity and ecosystems

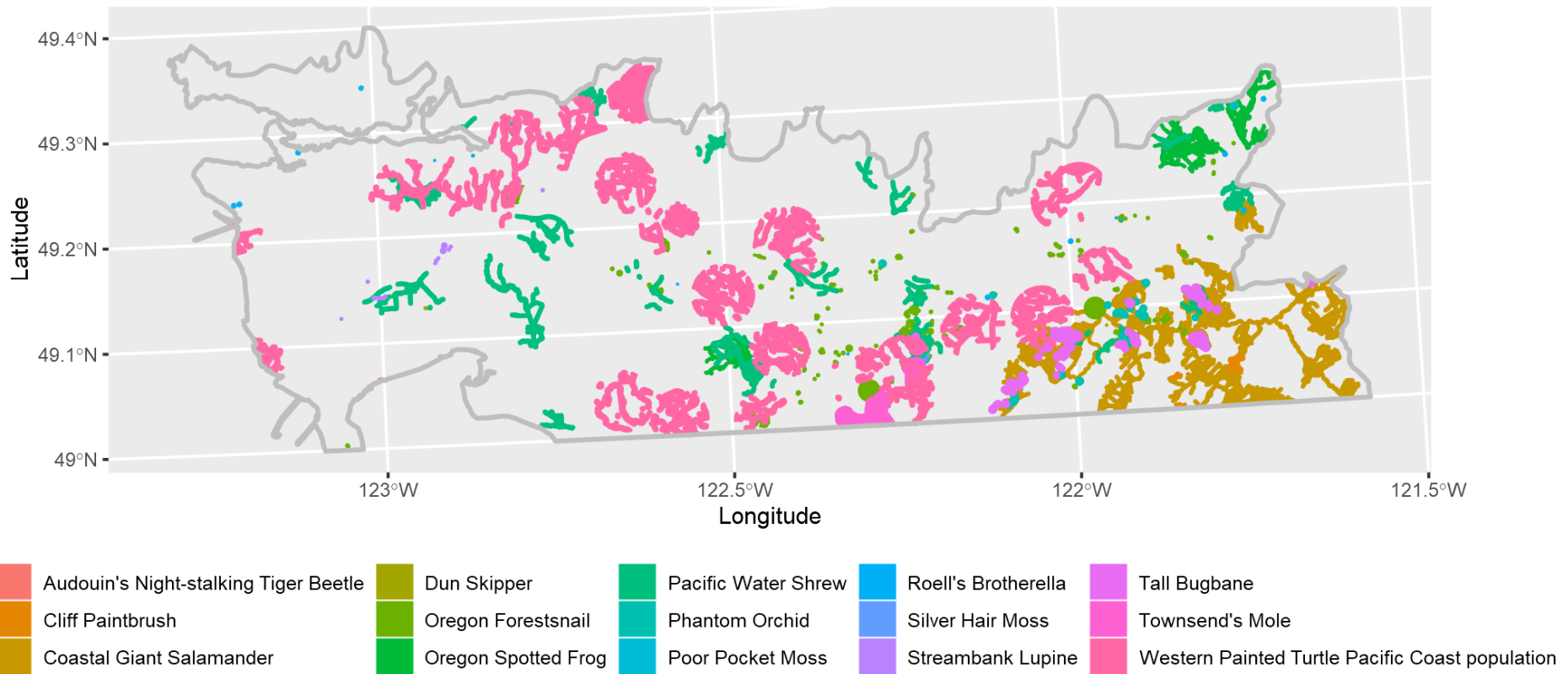




# Round 1 – Species Data (Compiled)

Small HR Species-At-Risk

Round 1 Species Data



# Next Steps

## 1. Compile “cost” layer

- Land Tenure (e.g., forest tenure)
- Protection (e.g., approved Wildlife Habitat Areas)

## 2. Run optimisation tool with and without owl (test) data

## 3. Collaborate with Sto:lo

- Incorporate First Nation values and objectives
- Re-run optimisation tool including Sto:lo input



Questions?