

Published on *South Coast Conservation Program* (<http://sccp.ca>)

Western River Cruiser

Macromia magnifica

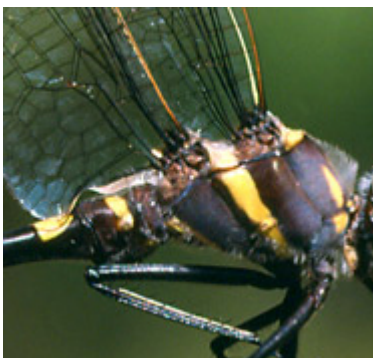
A member of the family Macromiidae (“Cruiser” dragonflies), sometimes considered a sub-family of Libellulidae (“Skimmer” dragonflies”). Members of this family skim or cruise along open water, often down the middle of rivers or streams or along the shores of lakes. They can also be seen exhibiting similar behavior on roads.



Male Paul Watson



Male Jamie Fenneman



Close up of thorax Doug Danforth



Male Rob Cannings

Characteristics

Length: males 6.4—6.8 cm, females: 6.5—7.0 cm. A relatively large dragonfly, sexes are similar in colouration (females slightly larger). The head is brown with greenish-grey eyes that meet across the top of the head. The face below the eyes is marked with yellow. The thorax is greenish-brown with fine hairs and a metallic luster. A bold yellow stripe extends diagonally from the dorsal area along each side of the thorax. The wing vein at the front of the wing is yellow, the rest are black. The abdomen is black with yellow bands on the dorsal area of each segment (somewhat wider and more v-shaped near the bulbous abdominal tip). Legs on this species are unusually long. Females in the family Macromiidae lack an ovipositor (structure used to deposit eggs). Populations from the South Coast and Shuswap regions are darker. The 3.1 cm larvae have a prominent horn between the antennae, large eyes and long legs. The abdomen is broad, round and has high, slightly arched dorsal hooks.

Status

Global Status:	G5
Provincial Status:	S3
BC List Status:	Blue (Considered to be of Special Concern)

Resources

For further information see

[Living Landscapes Royal BC Museum Dragonflies](#)

[Odonata Central](#)

[Northwest Dragonflies](#)

[BC Species and Ecosystems Explorer: Species and Ecosystems Search](#)

A source for authoritative conservation information on thousands of plants and animals and hundreds of ecological communities in BC. From here connect to all provincial and federal recovery plans (including the SARA Registry), COSEWIC (Committee on the Status of Endangered Wildlife in Canada), Identified Wildlife guidance and conservation requirements for specific species and ecological communities of conservation concern impacted by forestry activities) and links to E-Flora and E-Fauna (the Electronic Atlas of the Plants and Wildlife of British Columbia).

[British Columbia's Coast Region Species & Ecosystems of Conservation Concern](#)

A joint venture resource providing comprehensive information on a range of species and ecological communities specific to the Coast Region of BC (including the South, Central and North Coast, Vancouver Island and Haida Gwaii).

[Develop With Care Guidelines \(see Lower Mainland Region section\)](#)

Environmental guidelines for urban and rural land development in BC.

[Species at Risk & Local Governments a Primer for BC](#)

Learn what species are at risk in your area, search by name, habitat type, regional district and forest district.

Source URL: <http://sccp.ca/species-habitat/western-river-cruiser>

Links

[1] <https://www.royalbcmuseum.bc.ca/exhibits/living-landscapes/northwest/dragonflies/index.htm>

[2] <http://www.odonatacentral.org/>

[3] http://nwdragonflier.blogspot.ca/p/web-resources_06.html

[4] <http://www2.gov.bc.ca/gov/content/environment/plants-animals-ecosystems/conservation-data-centre/explore-cdc-data/species-and-ecosystems-explorer>

[5] <http://www.geog.ubc.ca/biodiversity/factsheets/>

[6] http://www.env.gov.bc.ca/wld/documents/bmp/devwithcare2006/develop_with_care_intro.html

[7] <http://www.speciesatrisk.bc.ca/>