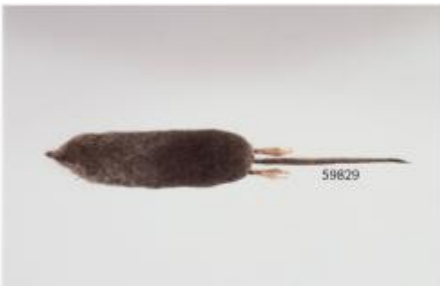


Published on *South Coast Conservation Program* (<http://sccp.ca>)

## Olympic Shrew

*Sorex rohweri*

Of the 12 species of the family Soricidae (shrews), in BC, *S. rohweri*, also referred to as “Rohwer’s Shrew”, is the most recent to be identified (2006). They are restricted to the extreme southwest of the Coast Region where they are at the northern end of their North American range.



Olympic Shrew (dorsal view) R&V  
Rausch 2008



Olympic Shrew (ventral view) R&V  
Rausch 2008



Cinereus Shrew Phil Myers University  
of Michigan



Cinereus Shrew Pamela Zevit 2005

## Characteristics

The dorsal pelage (fur) is brownish-grey, somewhat paler ventrally. The tail is bi-coloured, and tapers uniformly to the tip without a terminal hair tuft. The skull is relatively long, with a narrow rostrum. In shrews dentition patterns, shape and number are a key identification tool. In the Olympic Shrew, central (medial) tines (points) of the incisors are very small, slightly projecting; situated above or near the outer margin of pigmentation on incisors, with little or no pigmentation. Only voucher images of Olympic Shrews are available, however this species is virtually identical to the more common Cinereus Shrew (shown in slideshow).

## Status

**Global Status:** G4G5

**Provincial Status:** S2?

**BC List Status:** Red (Candidates for- Extirpated, Endangered, or Threatened status)

## Resources

### For further information see

#### BC Species and Ecosystems Explorer: Species and Ecosystems Search

A source for authoritative conservation information on thousands of plants and animals and hundreds of ecological communities in BC. From here connect to all provincial and federal recovery plans (including the SARA Registry), COSEWIC (Committee on the Status of Endangered Wildlife in Canada), Identified Wildlife guidance and conservation requirements for specific species and ecological communities of conservation concern impacted by forestry activities) and links to E-Flora and E-Fauna (the Electronic Atlas of the Plants and Wildlife of British Columbia).

#### British Columbia's Coast Region Species & Ecosystems of Conservation Concern

Description Lorem ipsum dolor sit amet, ligula eu sem eget. Facilisis turpis mi aliquam a pede. Et sollicitudin, id litora. Description Lorem ipsum dolor sit amet, ligula eu sem eget. Facilisis turpis

#### Develop With Care Guidelines (see Lower Mainland Region section)

Description Lorem ipsum dolor sit amet, ligula eu sem eget. Facilisis turpis mi aliquam a pede. Et sollicitudin, id litora. Description Lorem ipsum dolor sit amet, ligula eu sem eget. Facilisis turpis.

#### Species at Risk & Local Governments a Primer for BC

Description Lorem ipsum dolor sit amet, ligula eu sem eget. Facilisis turpis mi aliquam a pede. Et sollicitudin, id litora. Description Lorem ipsum dolor sit amet, ligula eu sem eget. Facilisis turpis

---

**Source URL:** <http://sccp.ca/species-habitat/olympic-shrew>

#### Links

[1] <http://sccp.ca/printpdf/61>

[2] <http://www2.gov.bc.ca/gov/content/environment/plants-animals-ecosystems/conservation-data-centre/explore-cdc-data/species-and-ecosystems-explorer>

[3] <http://www.geog.ubc.ca/biodiversity/factsheets/>

[4] [http://www.env.gov.bc.ca/wld/documents/bmp/devwithcare2006/develop\\_with\\_care\\_intro.html](http://www.env.gov.bc.ca/wld/documents/bmp/devwithcare2006/develop_with_care_intro.html)

[5] <http://www.speciesatrisk.bc.ca/>